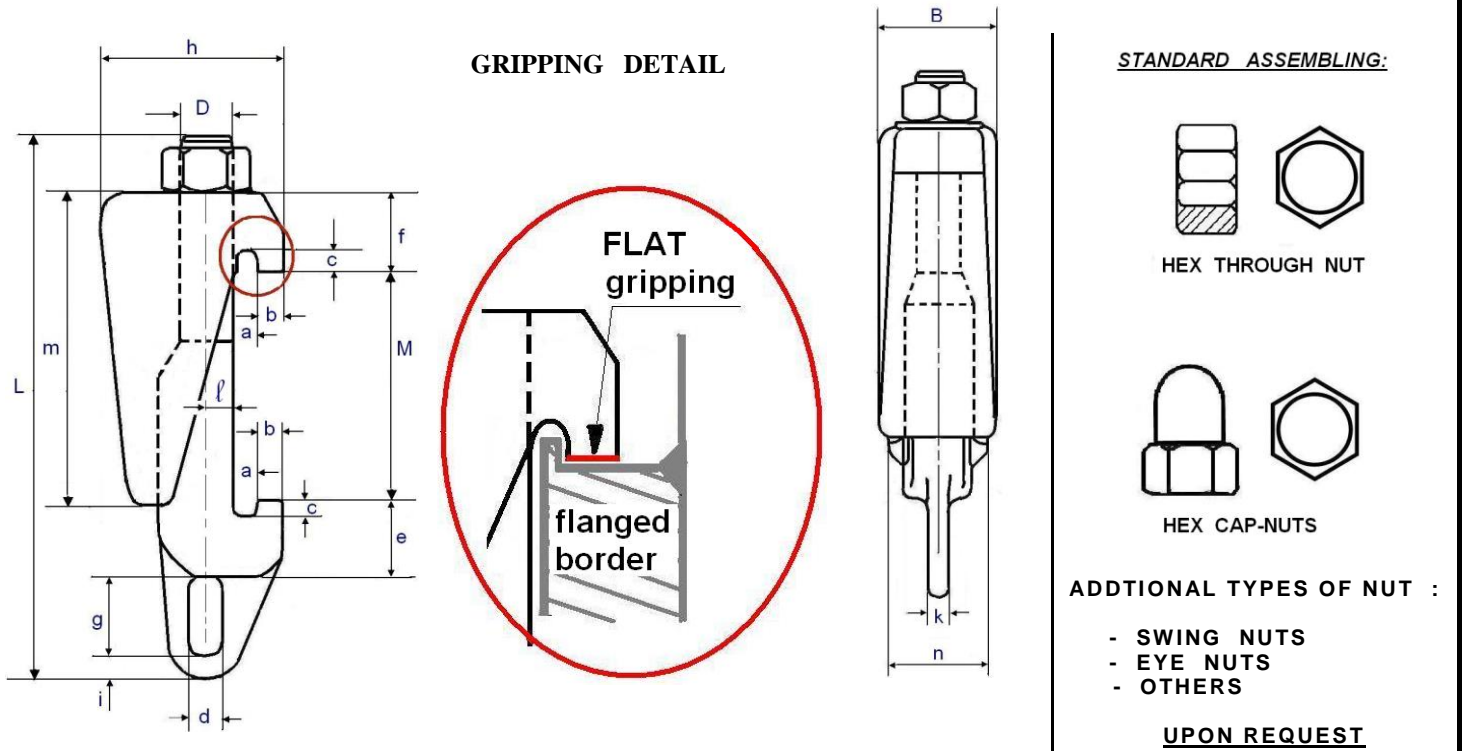


# FLAT GRIP pressure vessel CLAMPS



**Standard size modification : upon request**

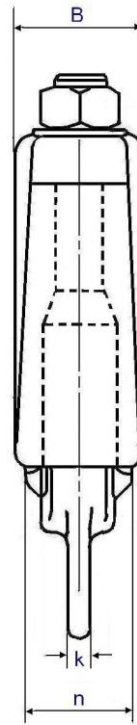
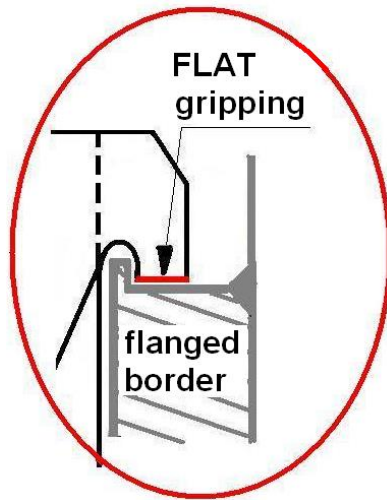
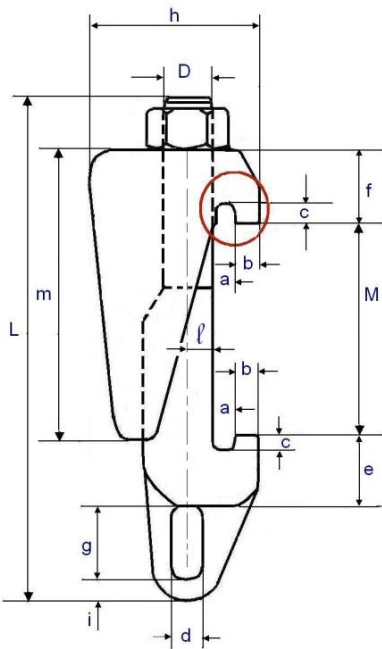
TYPE	M	L	B	a	b	c	d	e	f	g	h	i	k	l	m	n	Kg.
	OPENING																
M10 - K	13 - 24	83	25	4	4	4	6	13	12	15	27	5	6	5	43	20	0,16
M10 - L	22 - 33	94	25	4	4	4	6	13	12	15	27	5	6	5	43	20	0,18
M10 - LS	70 - 83	122					upon request										
M12 - L	40 - 56	133	34	4	5	4	8	18	20	16	38	6	8	6	70	30	0,50
M16 - K	40 - 60	165	40	6	7	5	12	25	25	25	58	8	8	8	100	32	1,13
M16 - L	55 - 85	192	40	6	7	5	12	25	25	25	58	8	8	8	100	32	1,21
M16 - L2	80 - 110	213	40	6	7	5	12	25	25	25	58	8	8	8	100	32	1,28
M16 - LS	95 - 125	234	40	6	7	5	12	25	25	25	58	8	8	8	100	32	1,40
M20 - K	50 - 75	200	45	10	9	8	14	30	30	30	73	8	8	10	115	42	1,95
M20 - L	65 - 90	212	45	10	9	8	14	30	30	30	73	8	8	10	115	42	2,00
M20 - L2	90 - 130	252	45	10	9	8	14	30	30	30	73	8	8	10	115	42	2,20
M24 - K	65 - 95	230	52	10	11	8	14	34	34	30	78	9	10	12	130	46	2,65
M24 - L	90 - 130	265	52	10	11	8	14	34	34	30	78	9	10	12	130	46	3,00
M24 - L2	120 - 160	300	52	10	11	8	14	34	34	30	78	9	10	12	130	46	3,20
M24 - LS	155 - 200	340	52	10	11	8	14	34	34	30	78	9	10	12	130	46	3,40
M24 - LP	180 - 260	404	52	10	11	8	14	34	34	30	78	9	10	12	130	46	4,40
M24 - LX	290 - 330	470					upon request										
M27 - K	90 - 110	290	63	10	16	8	14	52	45	40	85	9	10	15	155	55	4,80
M27 - L	115 - 145	327	63	10	16	8	14	52	45	40	85	9	10	15	155	55	5,00
M27 - L2	150 - 195	375	63	10	16	8	14	52	45	40	85	9	10	15	155	55	5,15
M27 - L3	205 - 255	435	63	10	16	8	14	52	45	40	85	9	10	15	155	55	6,15
M27 - BV	250 - 300	480	63	10	16	8	14	52	45	40	85	9	10	15	155	55	7,20
M27 - LS	340 - 385	565	63	10	16	8	14	52	45	40	85	9	10	15	155	55	7,70
M27 - LX	440 - 480	680					upon request										

Sizes in millimetres

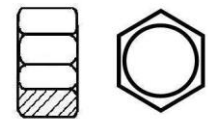
PAGE. 1 of 2

# FLAT GRIP pressure vessel CLAMPS

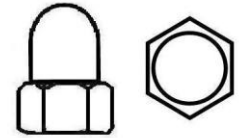
## GRIPPING DETAIL



### STANDARD ASSEMBLING:



HEX THROUGH NUT



HEX CAP-NUTS

### ADDITIONAL TYPES OF NUT :

- SWING NUTS
- EYE NUTS
- OTHERS

UPON REQUEST

### Standard size modification : upon request

TYPE	M	L	B	a	b	c	d	e	f	g	h	i	k	l	m	n	Kg.
	OPENING																
M33 - K	100 - 150	380	70	12	20	10	24	65	56	48	102	10	20	18	200	70	9,20
M33 - L	150 - 200	430	70	12	20	10	24	65	56	48	102	10	20	18	200	70	10,1
M33 - Spc.	180 - 220	440	70	12	20	10	24	63	56	48	102	10	20	18	200	70	10,2
M33 - L2	200 - 250	480	70	12	20	10	24	65	56	48	102	10	20	18	200	70	10,8
M33 - L3	250 - 300	530	70	12	20	10	24	65	56	48	102	10	20	18	200	70	11,4
M33 - L4	280 - 320	550	70	12	20	10	24	65	56	48	102	10	20	18	200	70	12,0
M33 - L5	365 - 415	645	70	12	20	10	24	65	56	48	102	10	20	18	200	70	12,8
M33 - LX	380 - 430	655					upon request										
M33 - LY	510 - 560	810					upon request										
M56 - L	200 - 245	523					upon request										
M56 - L2	260 - 350	640					upon request										
M56 - L3	380 - 420	705					upon request										

Sizes in millimetres

- **MATERIALS** : - alloy steel : ASTM A193 Gr.B7  
- stainless steel : AISI 316L / ASTM A193 Gr.B8M/ ASTM A182 F316L  
- other materials: upon request
- **FINISHING** : - yellow / white zinc plating  
- passivation , polishing  
- other finishings: upon request
- **CERTIFICATES** : - EN 10204 3.1: with each supply  
- EN 10204 3.2 : upon request