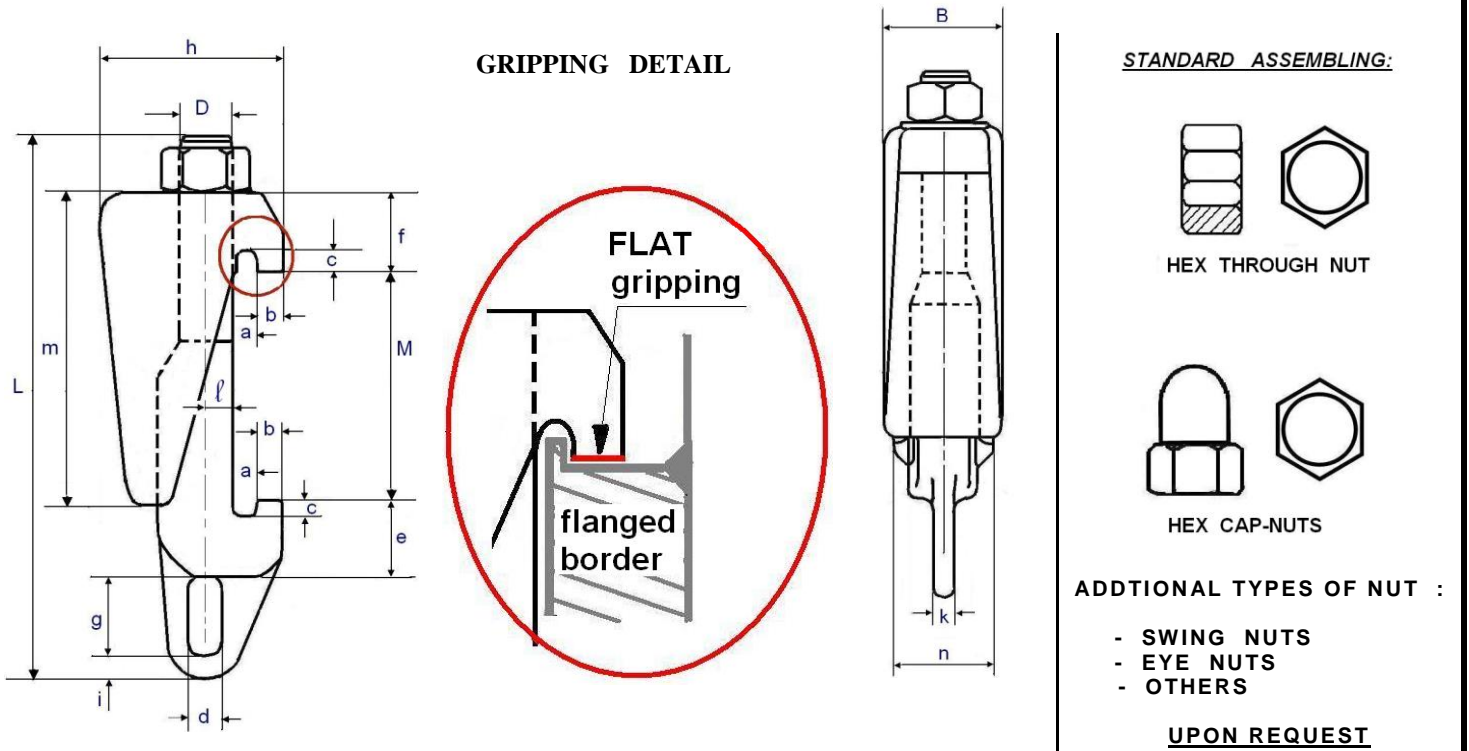


# FLAT GRIP pressure vessel CLAMPS



**Standard size modification : upon request**

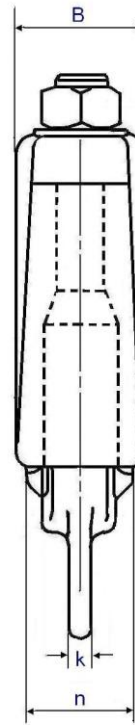
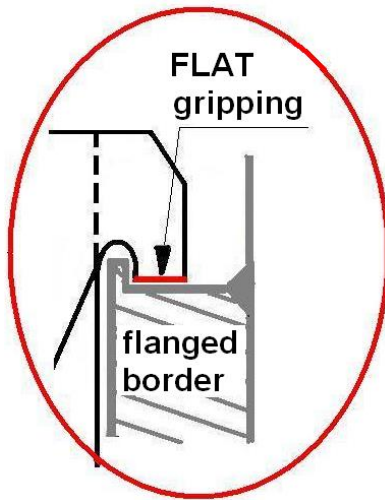
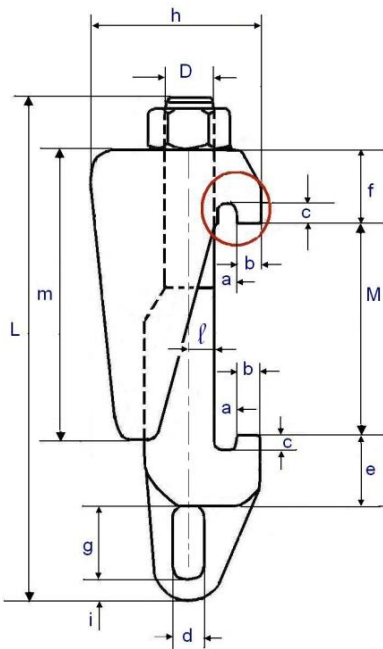
TYPE	M	L	B	a	b	c	d	e	f	g	h	i	k	ℓ	m	n	Lbs
	<b>OPENING</b>																
M10 (3/8") - K	.51 - .94	3.27	.98	.157	.157	.157	.236	.51	.47	.59	1.06	.197	.236	.197	1.69	.79	.35
M10 (3/8") - L	.87-1.30	3.70	.98	.157	.157	.157	.236	.51	.47	.59	1.06	.197	.236	.197	1.69	.79	.39
M10 (3/8") - LS	2.76 - 3.27	4.80						upon request									
M12 (1/2") - L	1.57 - 2.20	5.24	1.34	.157	.197	.157	.315	.71	.79	.63	1.50	.236	.315	.236	2.76	1.18	1.10
M16 (5/8") - K	1.57 - 2.36	6.50	1.57	.236	.276	.197	.47	.98	.98	.98	2.28	.315	.315	.315	3.62	1.26	2.49
M16 (5/8") - L	2.17 - 3.35	7.56	1.57	.236	.276	.197	.47	.98	.98	.98	2.28	.315	.315	.315	3.62	1.26	2.66
M16 (5/8") - L2	3.15 - 4.33	8.39	1.57	.236	.276	.197	.47	.98	.98	.98	2.28	.315	.315	.315	3.62	1.26	2.82
M16 (5/8") - LS	3.74 - 4.92	9.21	1.57	.236	.276	.197	.47	.98	.98	.98	2.28	.315	.315	.315	3.62	1.26	3.08
M20 (3/4") - K	1.97 - 2.95	7.87	1.77	.39	.354	.315	.55	1.18	1.18	1.18	2.87	.315	.315	.39	4.53	1.65	4.29
M20 (3/4") - L	2.56 - 3.54	8.35	1.77	.39	.354	.315	.55	1.18	1.18	1.18	2.87	.315	.315	.39	4.53	1.65	4.40
M20 (3/4") - L2	3.54 - 5.12	9.92	1.77	.39	.354	.315	.55	1.18	1.18	1.18	2.87	.315	.315	.39	4.53	1.65	4.85
M20 (1") - K	2.56 - 3.74	9.06	2.05	.39	.43	.315	.55	1.34	1.34	1.18	3.07	.354	.39	.47	5.12	1.81	5.84
M24 (1") - L	3.54 - 5.12	10.43	2.05	.39	.43	.315	.55	1.34	1.34	1.18	3.07	.354	.39	.47	5.12	1.81	6.61
M24 (1") - L2	4.72 - 6.30	11.81	2.05	.39	.43	.315	.55	1.34	1.34	1.18	3.07	.354	.39	.47	5.12	1.81	7.05
M24 (1") - LS	6.10 - 7.87	13.39	2.05	.39	.43	.315	.55	1.34	1.34	1.18	3.07	.354	.39	.47	5.12	1.81	7.49
M24 (1") - LP	7.09-0.24	15.90	2.05	.39	.43	.315	.55	1.34	1.34	1.18	3.07	.354	.39	.47	5.12	1.81	10.6
M24 (1") - LX	11.42-12.99	18.50						upon request									
M27 (1.1/16")-K	3.54 - 4.33	11.42	2.48	.39	.63	.315	.55	2.05	1.77	1.57	3.35	.354	.39	.59	6.10	2.17	10.6
M27 (1.1/16")-L	4.53 - 5.71	11.42	2.48	.39	.63	.315	.55	2.05	1.77	1.57	3.35	.354	.39	.59	6.10	2.17	11.0
M27 (1.1/16")-L2	5.91 - 7.68	11.42	2.48	.39	.63	.315	.55	2.05	1.77	1.57	3.35	.354	.39	.59	6.10	2.17	11.4
M27 (1.1/16")-L3	8.07-10.04	11.42	2.48	.39	.63	.315	.55	2.05	1.77	1.57	3.35	.354	.39	.59	6.10	2.17	13.6
M27 (1.1/16")-BV	9.84-11.81	11.42	2.48	.39	.63	.315	.55	2.05	1.77	1.57	3.35	.354	.39	.59	6.10	2.17	16.0
M27 (1.1/16")-LS	13.39-15.16	11.42	2.48	.39	.63	.315	.55	2.05	1.77	1.57	3.35	.354	.39	.59	6.10	2.17	17.0
M27 (1.1/16")-LX	17.32-18.90	26.77						upon request									

Sizes in inches

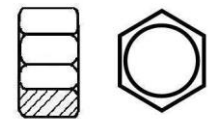
Sheet. No. <b>IF 11</b>	Rev. <b>B</b>	Date: <b>May 2018</b>	<b>interforgia</b> 	<b>IT IS FORBIDDEN to copy, to modify and to disclose this document</b>
----------------------------	------------------	--------------------------	--	---

# FLAT GRIP pressure vessel CLAMPS

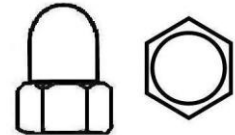
## GRIPPING DETAIL



## STANDARD ASSEMBLING:



HEX THROUGH NUT



HEX CAP-NUTS

## ADDITIONAL TYPES OF NUT :

- SWING NUTS
- EYE NUTS
- OTHERS

UPON REQUEST

## Standard size modification : upon request

TYPE	M	L	B	a	b	c	d	e	f	g	h	i	k	ℓ	m	n	Kg.
	<b>OPENING</b>																
M33 (1.1/4") - K	3.94 - 5.91	14.96	2.76	.47	.79	.39	.94	2.56	2.20	1.89	4.01	.39	.79	.71	7.87	2.76	20.4
M33 (1.1/4") - L	5.91 - 7.87	16.93	2.76	.47	.79	.39	.94	2.56	2.20	1.89	4.01	.39	.79	.71	7.87	2.76	22.4
M33 (1.1/4")-Spc.	7.08 - 8.66	17.32	2.76	.47	.79	.39	.94	2.56	2.20	1.89	4.01	.39	.79	.71	7.87	2.76	22.7
M33 (1.1/4")- L2	7.87 - 9.84	18.90	2.76	.47	.79	.39	.94	2.56	2.20	1.89	4.01	.39	.79	.71	7.87	2.76	24.0
M33 (1.1/4")-L3	9.84-11.81	20.87	2.76	.47	.79	.39	.94	2.56	2.20	1.89	4.01	.39	.79	.71	7.87	2.76	25.3
M33 (1.1/4") - L4	10.63-12.60	21.65	2.76	.47	.79	.39	.94	2.56	2.20	1.89	4.01	.39	.79	.71	7.87	2.76	26.7
M33 (1.1/4") -L5	14.37-16.38	25.39	2.76	.47	.79	.39	.94	2.56	2.20	1.89	4.01	.39	.79	.71	7.87	2.76	28.4
M33 (1.1/4")- LX	14.96-16.93	25.79						upon request									
M33 (1.1/4") -LY	20.08-22.05	31.89						upon request									
M56 (2.3/16")- L	7.87 - 9.65	20.59						upon request									
M56 (2.3/16")- L2	10.24-13.78	25.20						upon request									
M56 (2.3/16")- L3	14.96-16.54	27.76						upon request									

Sizes in inches

- **MATERIALS** : - alloy steel : ASTM A193 Gr.B7  
 - stainless steel : AISI 316L / ASTM A193 Gr.B8M/ ASTM A182 F316L  
 - other materials: upon request
- **FINISHING** : - yellow / white zinc plating  
 - passivation , polishing  
 - other finishings: upon request
- **CERTIFICATES** : - EN 10204 3.1: with each supply  
 - EN 10204 3.2 : upon request