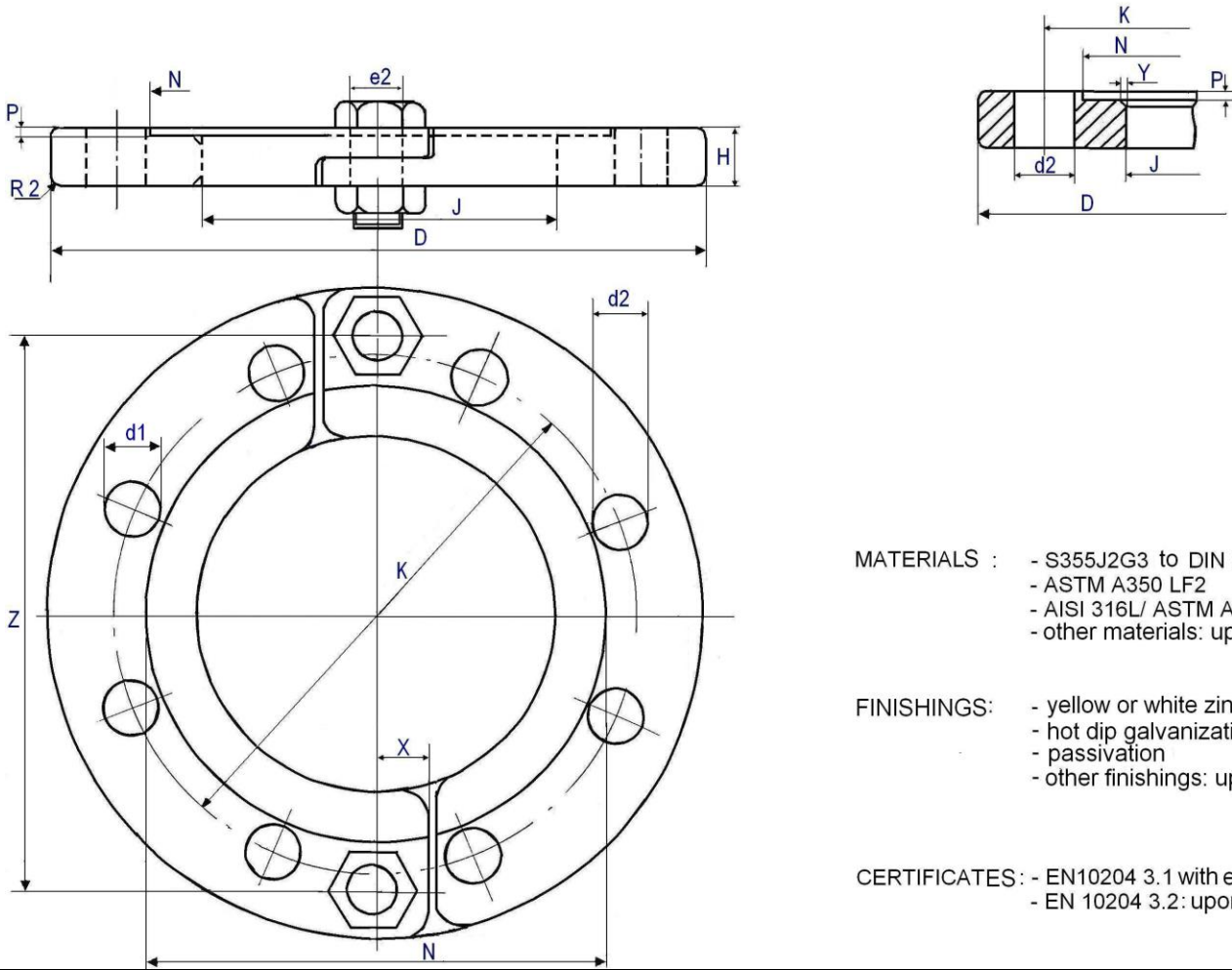


Split Flanges to ANSI B16.5 CLASS 150 Lbs



MATERIALS :

- S355J2G3 to DIN EN 10025
- ASTM A350 LF2
- AISI 316L/ ASTM A182 F316L
- other materials: upon request

FINISHINGS:

- yellow or white zinc plating
- hot dip galvanization
- passivation
- other finishings: upon request

CERTIFICATES :

- EN10204 3.1 with each supply
- EN 10204 3.2: upon request

Size modifications : upon request

<i>DN</i>	<i>D</i>	<i>K</i>	<i>H</i>	<i>J</i>	<i>N</i>	<i>P</i>	<i>X</i>	<i>Y</i>	<i>Z</i>	<i>d1</i> threaded holes	<i>No. d2</i>	<i>No.e2</i>	<i>PN</i>
1"	4.25	3.11	0.55	1.77	2.50	0.079	0.47	2 x 45°	3.35	1/2"	4x 0.59	2 x 0.39	150
1.1/4"	4.61	3.50	0.55	2.17	2.89	0.079	0.59	2 x 45°	3.74	1/2"	4x 0.59	2 x 0.47	150
1.1/2"	5.00	3.88	0.55	2.48	3.25	0.079	0.59	2 x 45°	4.13	1/2"	4x 0.59	2 x 0.47	150
2"	6.02	4.74	0.63	3.07	4.09	0.079	0.59	2 x 45°	5.12	5/8"	4x 0.71	2 x 0.47	150
3"	7.48	6.00	0.71	4.13	5.39	0.079	0.59	2 x 45°	6.30	5/8"	4x 0.71	2 x 0.47	150
4"	9.02	7.50	0.79	5.31	6.30	0.118	0.59	3 x 45°	7.68	5/8"	8x 0.71	2 x 0.47	150
4.3/8"	9.02	7.50	1.02	5.31	6.30	0.118	0.59	3 x 45°	7.68	5/8"	8x 0.71	2 x 0.47	150
5"	10.00	8.50	1.18	6.30	7.48	0.118	0.59	3 x 45°	8.66	3/4"	8x 0.86	2 x 0.47	150
6"	11.02	9.49	0.98	7.28	8.58	0.118	0.71	3 x 45°	9.84	3/4"	8x 0.86	2 x 0.55	150
8"	13.50	11.73	1.10	9.45	10.75	0.118	0.71	3 x 45°	12.20	3/4"	8x 0.86	2 x 0.55	150
10"	15.98	14.25	1.26	11.42	12.87	0.118	0.71	3 x 45°	14.37	7/8"	12x 0.98	2 x 0.55	150
12"	19.02	17.01	1.38	13.46	15.23	0.118	0.71	3 x 45°	17.13	7/8"	12x 0.98	2 x 0.55	150
14"	21.02	18.74	1.57	14.96	17.08	0.118	0.71	3 x 45°	18.70	7/8"	12x 11.02	2 x 0.55	150
16"	23.50	21.26	1.57	17.13	19.13	0.118	0.79	3 x 45°	21.06	7/8"	16x 11.02	2 x 0.71	150

Sizes in inches

Sheet No.

IF 14

Rev.

I

Date:

February
2019

interforgia *if*

IT IS FORBBIDEN
to copy, to modify or
to diclose this
document