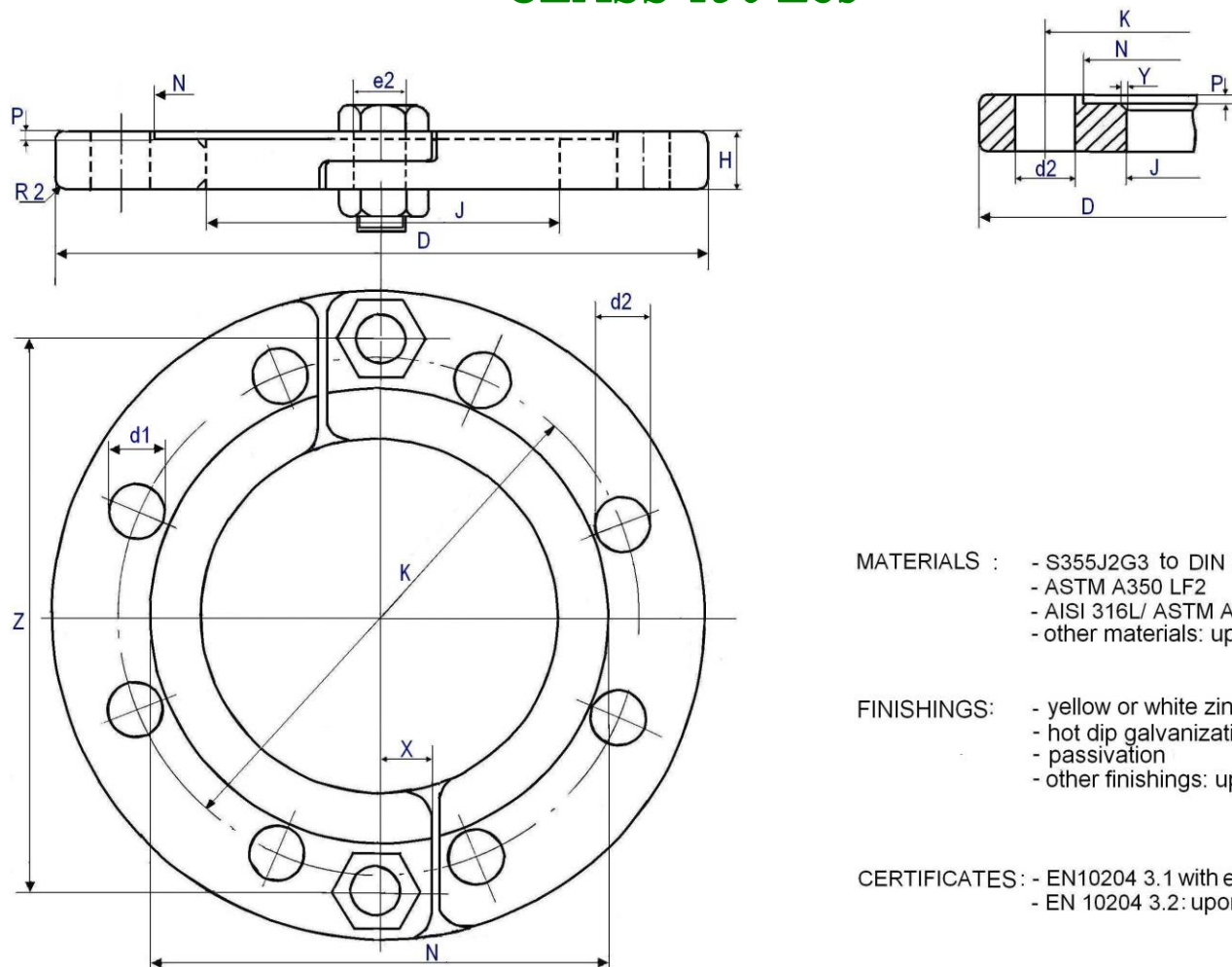


# Split Flanges to ANSI B16.5 CLASS 150 Lbs



**MATERIALS :**

- S355J2G3 to DIN EN 10025
- ASTM A350 LF2
- AISI 316L/ ASTM A182 F316L
- other materials: upon request

**FINISHINGS:**

- yellow or white zinc plating
- hot dip galvanization
- passivation
- other finishings: upon request

**CERTIFICATES:**

- EN10204 3.1 with each supply
- EN 10204 3.2: upon request

**Size modifications : upon request**

<i>DN</i>	<i>D</i>	<i>K</i>	<i>H</i>	<i>J</i>	<i>N</i>	<i>P</i>	<i>X</i>	<i>Y</i>	<i>Z</i>	<i>d1</i> <i>threaded</i> <i>holes</i>	<i>No. d2</i>	<i>No.e2</i>	<i>PN</i>
1"	108	79	14	45	63,5	2	12	2 x 45°	85	1/2"	4 x 15	2 x 10	150
1.1/4"	117	89	14	55	73,5	2	15	2 x 45°	95	1/2"	4 x 15	2 x 12	150
1.1/2"	127	98,5	14	63	82,5	2	15	2 x 45°	105	1/2"	4 x 15	2 x 12	150
2"	153	120,5	16	78	104	2	15	2 x 45°	130	5/8"	4 x 18	2 x 12	150
3"	190	152,5	18	105	137	2	15	2 x 45°	160	5/8"	4 x 18	2 x 12	150
4"	229	190,5	20	135	160	3	15	3 x 45°	195	5/8"	8 x 18	2 x 12	150
4.3/8"	229	190,5	26	135	160	3	15	3 x 45°	195	5/8"	8 x 18	2 x 12	150
5"	254	216	30	160	190	3	15	3 x 45°	220	3/4"	8 x 22	2 x 12	150
6"	280	241	25	185	218	3	18	3 x 45°	250	3/4"	8 x 22	2 x 14	150
8"	343	298	28	240	273	3	18	3 x 45°	310	3/4"	8 x 22	2 x 14	150
10"	406	362	32	290	327	3	18	3 x 45°	365	7/8"	12 x 25	2 x 14	150
12"	483	432	35	342	387	3	18	3 x 45°	435	7/8"	12 x 25	2 x 14	150
14"	534	476	40	380	434	3	18	3 x 45°	475	7/8"	12 x 28	2 x 14	150
16"	597	540	40	435	486	3	20	3 x 45°	535	7/8"	16 x 28	2 x 18	150

Sizes in millimetres

<b>Sheet No.</b>  <i>IF 14</i>	<b>Rev.</b>  I	<b>Date:</b>  February 2019	<b>interfor</b> <i>gia</i>	<b>IT IS FORBIDDEN</b> to copy, to modify or to diclose this document
--------------------------------------	----------------------	--------------------------------------	----------------------------	---